

# UR-W376C

# UNIC MINI-CRAWLER CRANE

**UR-W376C features a six-section hydraulic boom to allow a maximum hook height of 14.9m.**

The middle size UNIC mini-crawler crane can be operated either from the onboard operator seat or from a distance using a remote control. Its class-leading boom length of 14.61m brings wide working radius and excellent lifting height.

**Max 14.9m**  
Hook height (Approx.)  
(Above ground level)

**Max 3.03t x 2.5m**  
Lifting capacity

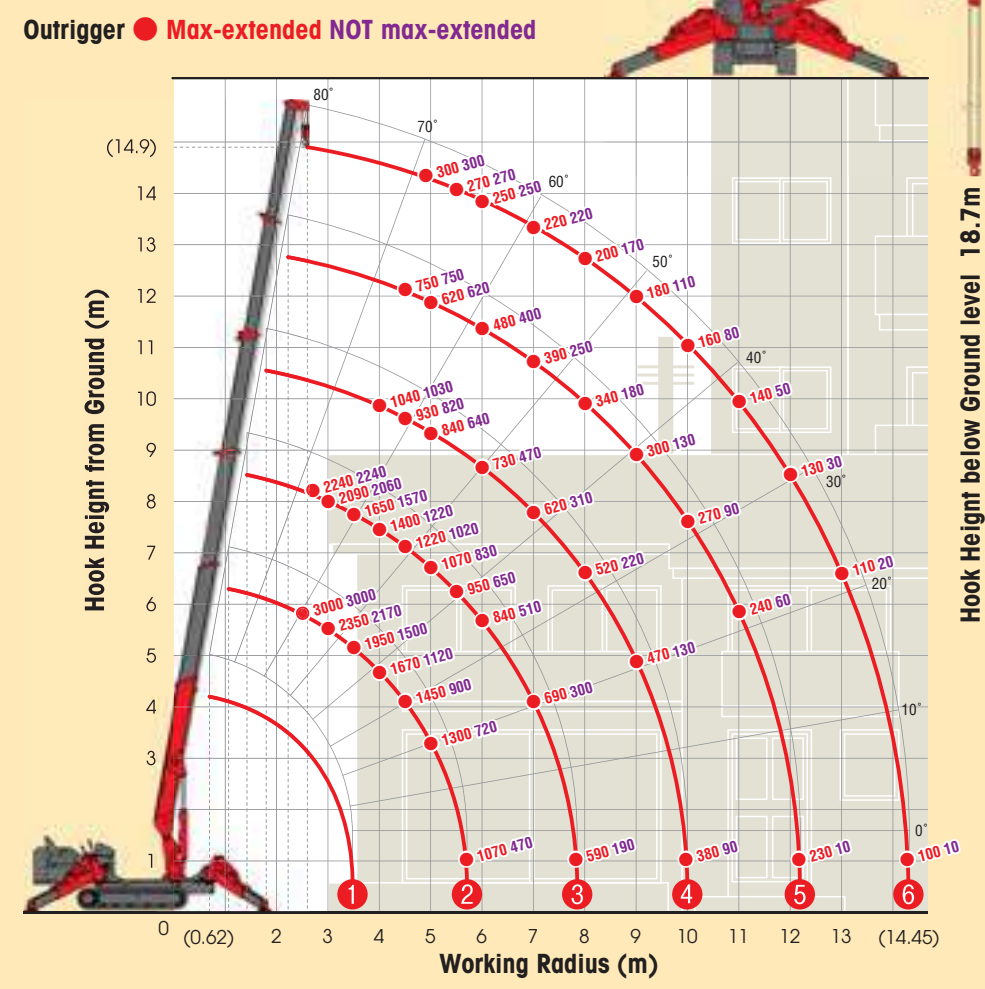
**Max 14.45m**  
Working radius

**3860kg**  
Mass of crane

Radio remote control



## WORKING RANGE & NET RATED LOADS (kg)



**Fly jib assembly (Options)**

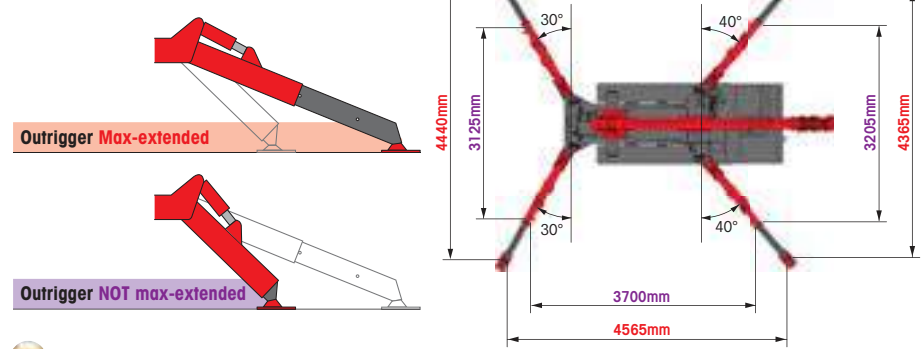
Searcher hook and Single line hook are included in Fly jib assembly.  
NOTE: Automatic stop for overloading is not available in combination with this Fly jib assembly. For more information, contact your local UNIC distributor.

Length	2.0m
Lifting capacity	Max. 700kg
Tilt angles	0°, 20°, 40°, 60°

## SPECIFICATIONS

Crane model	UR-W376C2	
Lifting capacity	Max. 3.03t at 2.5m	
Working radius	Min. 0.62m, Max. 14.45m	
Hook height (Approx.)	Max. 14.9m	
Length	Max. 18.7m with 4-part line Min. 3.63m to Max. 14.61m	
Boom	Extending speed [with electric power unit]	10.98m / 23.0 sec. [50Hz] 10.98m / 40.0 sec. [60Hz] 10.98m / 33.5 sec.
	Raising angle / speed [with electric power unit]	0° to 80° / 10.0 sec. [50Hz] 0° to 80° / 18.0 sec. [60Hz] 0° to 80° / 15.0 sec.
	Structure	6-section box beam type telescoping boom
Winch	Single line speed [with electric power unit]	68.0 m/min (at 4th layer) [50Hz] 34.0 m/min (at 4th layer) [60Hz] 40.0 m/min (at 4th layer)
	Hook speed [with electric power unit]	17.0 m/min at 4th layer with 4-part line [50Hz] 8.5 m/min (at 4th layer with 4-part line) [60Hz] 10.0 m/min (at 4th layer with 4-part line)
	Structure	Hydraulic motor driven, spur gear reduction, with automatic mechanical brake and wire rope retaining roller
Slewing	Wire rope	Construction : IWRC 6 x WS(26) GRADE B / Diameter x Length : 8mm x 85.0m / Breaking strength : 42.4kN (4320 kgf)
	Hook block	3.00t capacity, 2 sheaves with safety latch
	Range	360° continuous rotation on a ball bearing race
Outriggers	Speed [with electric power unit]	2.5 rpm [50Hz] 2.1 rpm [60Hz] 2.5 rpm
	Structure	Hydraulic motor driven, worm gear reduction, spur gear reduction, and worm self-locking brake (supported by ball bearings)
	Type	A double acting hydraulic cylinder, direct pushing type (Directly connected with hydraulic automatic lock device)
Hydraulic pump	Rated pressure	Variable delivery piston pump
	Rated delivery	21.6 MPa [220 kgf/cm <sup>2</sup> ]
	Rated revolution	60 liters/min
Hydraulic oil tank capacity	2500 rpm	
Safety devices		75 liters
		Pressure relief valve for hydraulic circuit / Counterbalance valves for boom raising and boom telescoping cylinders / Pilot-operated check valves for outrigger cylinders (Horizontal) / Double pilot-operated check valves for outrigger cylinders (Vertical) / Boom angle indicator with load indicator / Hook safety latch / Automatic mechanical brake for winch / Automatic stop for overwinding / Overwinding alarm / Automatic stop for leaving minimum wire rope / Emergency stop button / Inter-lock device of crane and crawling levers / Inter-lock device of crane and outriggers / Level / Automatic stop for overloading (KM-100) / Digital load meter / Three colored lamp / Headlight / Boom outrigger monitor lamp

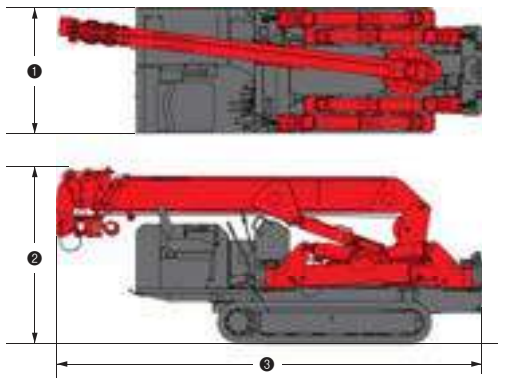
## OUTRIGGER POSITIONS



## CRAWLING GEAR

Crane model	UR-W376C2
Crawling speed [with electric power unit]	0-3.0 km/h, forward / backward [50Hz] 0-1.3 km/h [60Hz] 0-1.5 km/h
Hill climbing ability	23°
Tread length	1750mm
Ground contact pressure [with electric power unit]	36.3 kPa (0.37 kgf/cm <sup>2</sup> ) 37.3 kPa (0.38 kgf/cm <sup>2</sup> )
Engine manufacturer / model	Yanmar / 3TNV76
Displacement	1115cc
Maximum output	15.17kW(20.6PS) / 2500 rpm, Rated output
Fuel	Diesel
Fuel tank capacity	40 liters
Steering	Hydraulic drive independent of left / right
Starter	Starter motor

## DIMENSIONS



Crane model	UR-W376C2
1 Total width	1300mm
2 Total height	1800mm
3 Total Length	4340mm
Mass of crane	3860kg [4010kg] [with electric power unit]

**Electric power unit specifications**

Rated power	7.5kW (3-phase 4 poles)
Voltage	AC 200V or 400V (50Hz / 60Hz) 3 phase 4P

\*Not included any cables.