

UR-W295C

UNIC MINI-CRAWLER CRANE

UR-W295C is narrow enough to allow access through standard size doorway, but with 2.93t of lifting power.

UNIC original stability sensor system provides the benefit of turnover protection for safety. Its outriggers allow for independent multi-angle configurations to place at the best position in restricted or confined area. Easy and quickly installed searcher hook and fly jib options will increase working radius and lifting height further more.

Max 8.41m Working radius

Max 2.93t x 1.4m Lifting capacity

1850kg Mass of crane

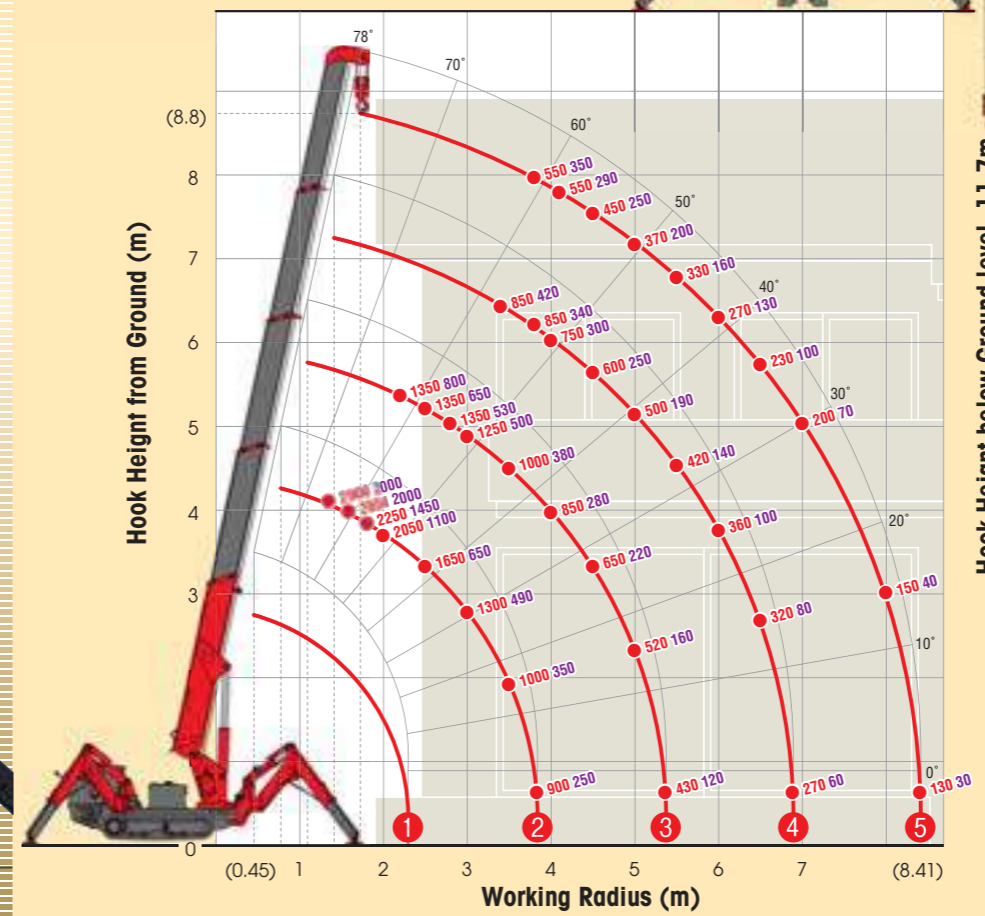
Radio remote control

Max 8.8m Hook height (Approx.) (Above ground level)

with electric power unit

WORKING RANGE & NET RATED LOADS (kg)

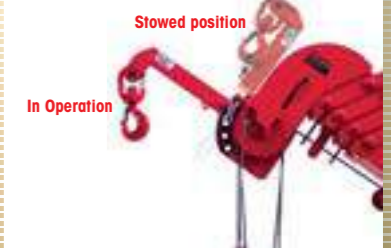
Outrigger ● Max-extended NOT max-extended



Load meter

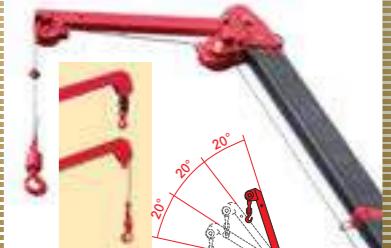


Searcher hook assembly (Options)



Length	500mm
Lifting capacity	Max. 300kg
Tilt angles	0°, 20°, 40°, 60°

Fly jib assembly (Options)

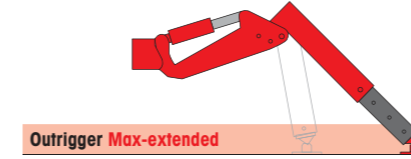


Length	1.5m
Lifting capacity	Max. 700kg
Tilt angles	0°, 20°, 40°, 60°

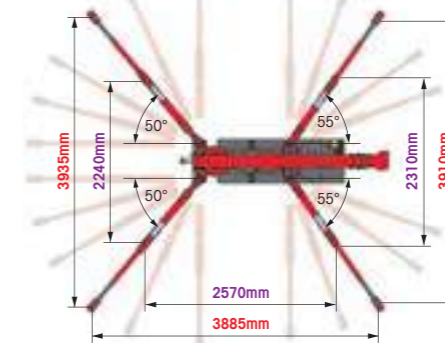
SPECIFICATIONS

Crane model	UR-W295C	UR-W295C1
Lifting capacity	Max. 2.93t at 1.4m	
Working radius	Min. 0.45m, Max. 8.41m	
Hook height (Approx.)	Max. 8.8m	
Length	Max. 11.7m with 4-part line	
Boom	Min. 2.53m to Max. 8.65m	
Extending speed [with electric power unit]	6.12m / 20.0 sec.	6.12m / 22.0 sec.
Raising angle / speed [with electric power unit]	[50Hz] 6.12m / 34.0 sec. [60Hz] 6.12m / 28.0 sec.	[50Hz] 6.12m / 33.0 sec. [60Hz] 6.12m / 28.0 sec.
Structure	5-section box beam type telescoping boom	
Winch	40.0 m/min (at 4th layer)	
Hook speed [with electric power unit]	[50Hz] 22.0 m/min (at 4th layer) [60Hz] 27.0 m/min (at 4th layer)	10.0 m/min at 4th layer with 4-part line
Structure	Hydraulic motor driven, spur gear reduction, with automatic mechanical brake	
Wire rope	Construction : IWRC 6 x WS(26) GRADE B / Diameter x Length : 8mm x 54.0m / Breaking strength : 42.4kN (4320 kgf)	
Hook block	2.90t capacity, 2 sheaves with safety latch	
Range	360° continuous rotation on a ball bearing race	
Speed	1.5 rpm	
Structure	Trochoid motor, worm gear reduction, and worm self-locking brake (supported by ball bearings)	
Outriggers	2-section (with damper) for bend and 3-section extension. Double acting hydraulic cylinders with pilot-operated check valves, direct pushing type (Directly connected with hydraulic automatic lock device)	
Hydraulic Pump	Variable delivery piston pump	
Rated pressure	21.6 MPa [220 kgf/cm ²]	
Rated delivery	38 liters/min	30 liters/min
Rated revolution	2000 rpm	2600 rpm
Hydraulic oil tank capacity	27 liters	
Safety devices	Pressure relief valve for hydraulic circuit / Counterbalance valves for boom raising and boom telescoping cylinders / Pilot-operated check valves for outrigger cylinders / Boom angle indicator with load indicator / Hook safety latch / Automatic mechanical brake for winch / Automatic stop for overwinding / Overwinding alarm / Automatic stop for leaving minimum wire rope / Emergency stop button (Ignition cut) / Inter-lock device of crane and crawling levers / Inter-lock device of crane and outriggers / Level / Turn over prevention device / Load meter	

OUTRIGGER POSITIONS



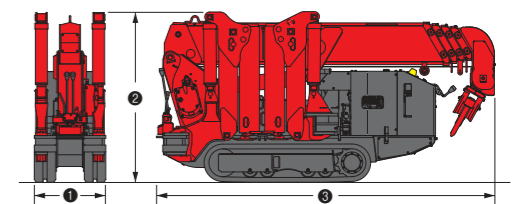
Outrigger NOT max-extended



CRAWLING GEAR

Crane model	UR-W295C	UR-W295C1
Crawling speed [with electric power unit]	0~2.3 km/h, forward / reverse [50Hz] 0~1.2 km/h [60Hz] 0~1.4 km/h	0~2.0 km/h, forward / reverse [50Hz] 0~1.2 km/h [60Hz] 0~1.4 km/h
Hill climbing ability	20°	
Tread length	1050mm	
Ground contact pressure [with electric power unit]	48.0 kPa [0.49 kg/cm ²]	49.8 kPa [0.51 kg/cm ²]
Engine manufacturer / model	Mitsubishi / GB400LE	Kubota / Z482-E3B
Displacement	391cc	479cc
Maximum output	6.6kW(9.0PS) / 1800 rpm, Rated output	7.4kW(10.0PS) / 2600 rpm, Rated output
Fuel	Petrol	Diesel
Fuel tank capacity	6 liters	10 liters
Steering	Hydraulic drive independent of left / right	
Starter	Starter motor (Recoil starter)	

DIMENSIONS



Crane model	UR-W295C	UR-W295C1
① Total width	600mm	
② Total height	1375mm [1430mm]	
③ Total Length	2690mm	2730mm
Mass of crane	1850kg [1980kg]	1920kg [2040kg]

Electric power unit specifications

Rated power	3.7kW (3-phase 4 poles)
Voltage	AC 200V or 400V (50Hz / 60Hz) 3 phase 4P

*Not included any cables.