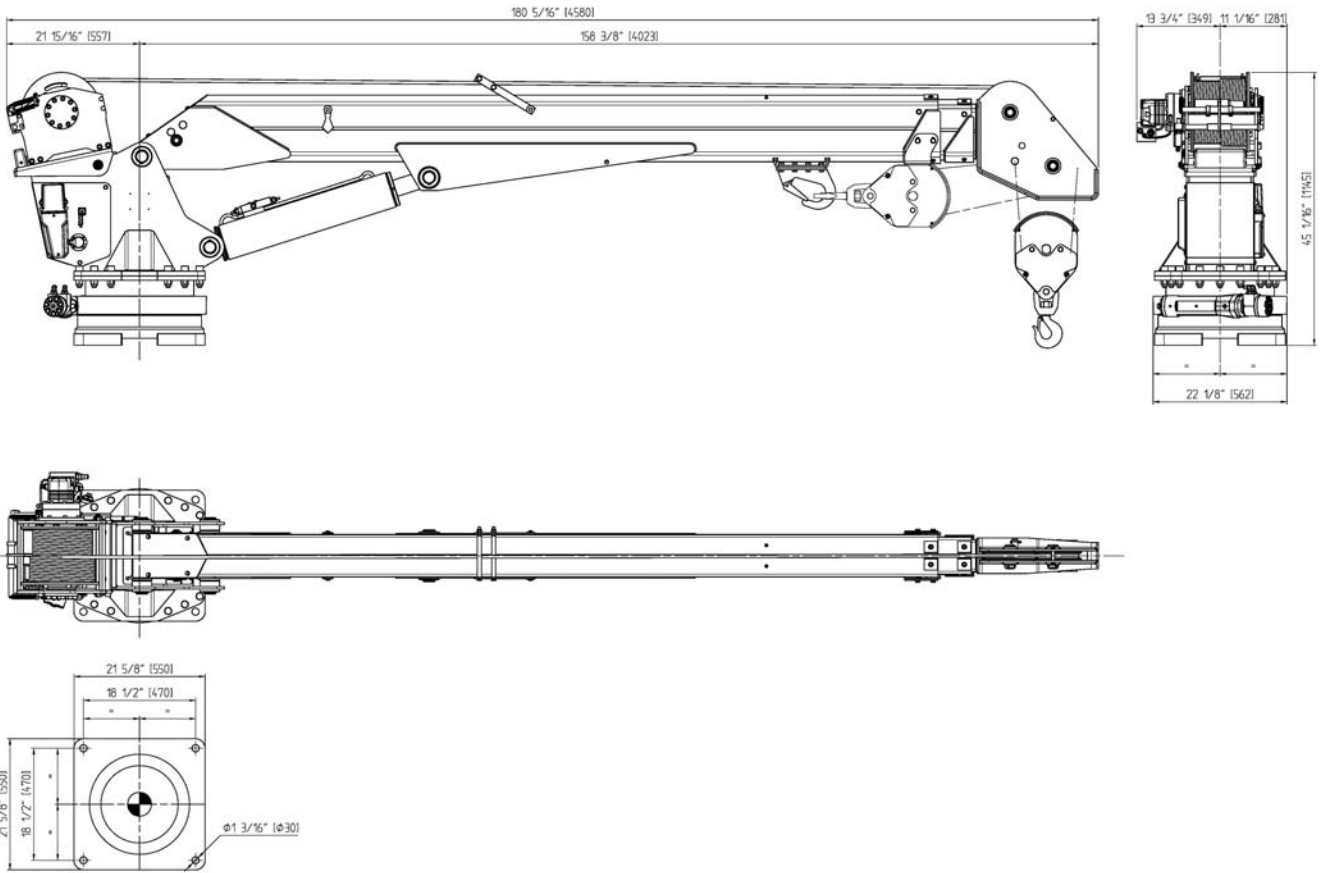


COBRA 14000.2

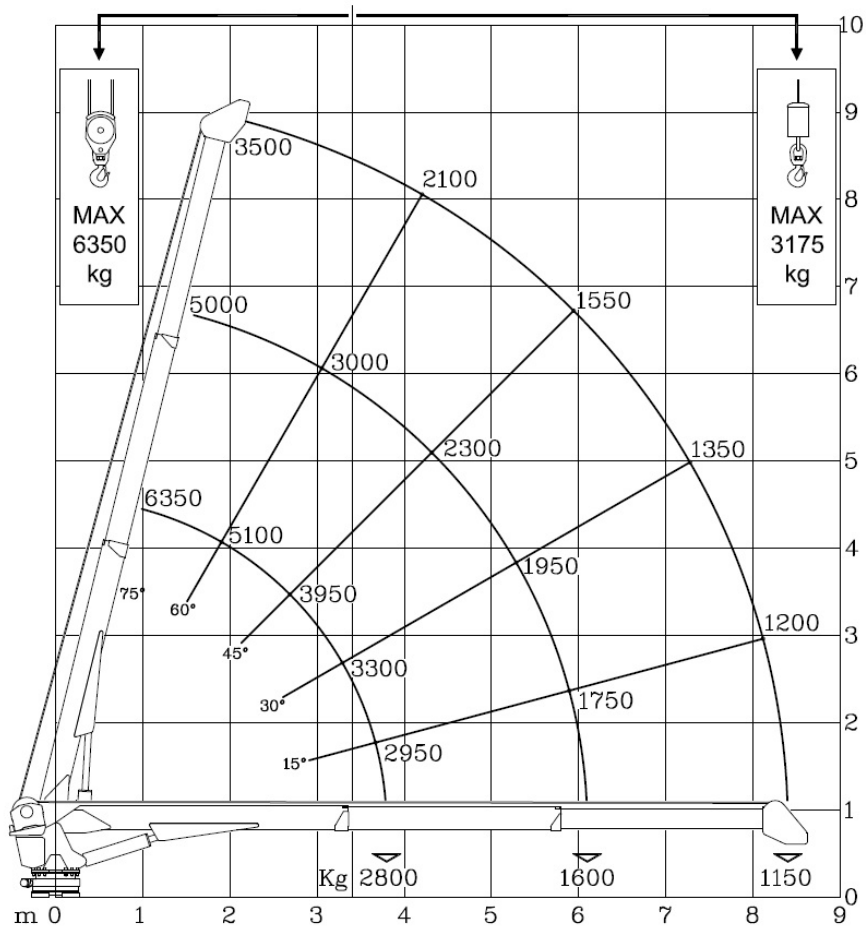
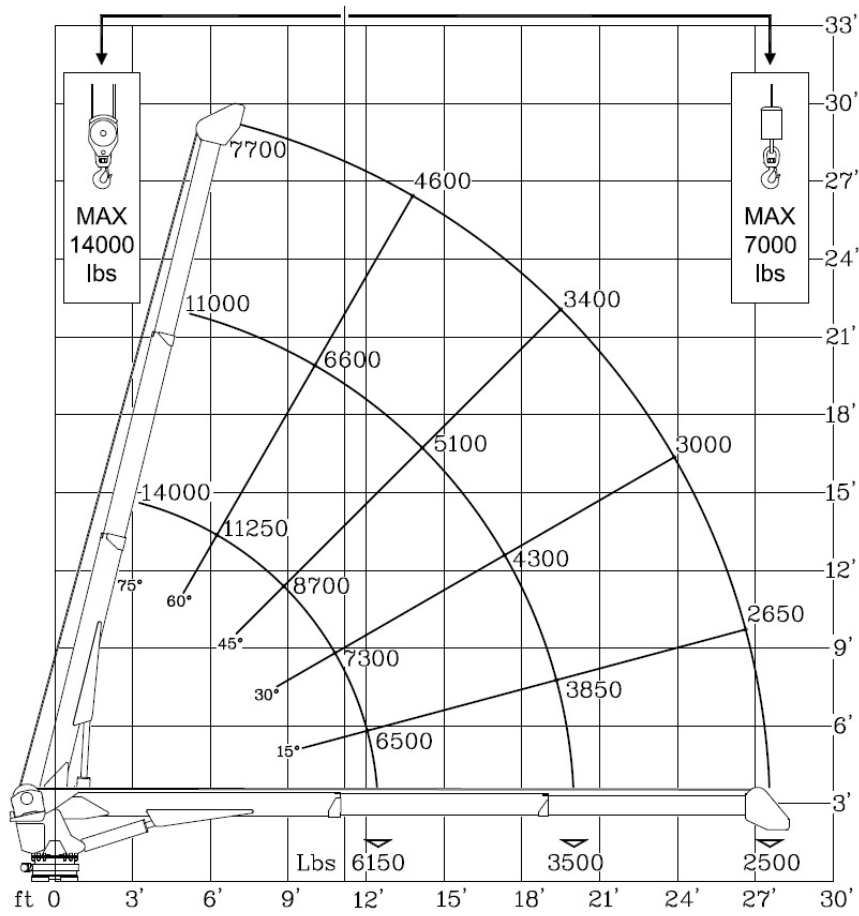



TECHNICAL SHEET

Overall dimensions 14000.2



Load chart 14000.2



 Next Hydraulics Boretto R.E.		CARATTERISTICHE TECNICHE TECHNICAL DATA	
CARATTERISTICHE TECNICHE TECHNICAL DATA	MODEL	14000	
	VERSION	14000.2	
MOMENTO DI SOLLEVAMENTO CRANE RATING	Tm kNm ft.lbs	10,9 106,9 78840	
NUMERO E TIPO SFILATE EXTENSIONS TYPE	N°	2 HYDRAULIC	
SFILAMENTO IDRAULICO HYDRAULIC EXTENSION	m ft	4,60 15	
SBRACCIO IDRAULICO HORIZONTAL REACH (from center line of rotation)	m ft	8,53 28'	
ANGOLO DI ROTAZIONE SLEWUNG ANGLE	°	CONTINUO CONTINUOUS	
COPPIA DI ROTAZIONE SLEWING TORQUE	kNm ft.lbs	10,8 8000	
ANGOLO DI ELEVAZIONE BRACCIO BOOM ELEVATION ANGLE	°	-5°/ +75°	
PORTATA OLIO CONSIGLIATA SUGGESTED OIL FLOW	lt/min U.S.gal	35 9,25	
ALTEZZA MAX. DALLA BASE MAX. LIFTING HEIGHT FROM CRANE BASE	m ft	9,15 30'	
PRESSIONE MAX. ESERCIZIO MAX. WORKING PRESSURE	bar psi	220 3190	
PESO GRU CRANE WEIGHT	kg lbs	1120 2460	

SPECIFICHE ARGANO/WINCH SPECIFICATIONS		
PORTATA MAX ARGANO TIRO DIRETTO (al 1° strato) WINCH SINGLE LINE CAPACITY (1 ST layer)	kg lbs	3200 7000
PORTATA MAX ARGANO TIRO DIRETTO (al 3° strato) WINCH SINGLE LINE CAPACITY (3rd layer)	kg lbs	2700 6000
VELOCITA DI SOLLEVAMENTO ARGANO PULL LINE SPEED (2 nd -3 rd Layer)	m/min ft/min	15 – 18 46 – 55
DIAMETRO FUNE ROPE DIAMETER	mm in	13 13/64"
LUNGHEZZA FUNE ROPE LENGHT	m ft	35 115'