

670SJ SL

SELF-LEVELLING TELESCOPIC BOOM LIFT

BOOM LIFT



Performance

Platform Height	20.36 m
Horizontal Outreach	17.40 m
Swing	360 Degrees Continuous
Platform Capacity	
Restricted	340 kg
Unrestricted	250 kg
Platform Rotator	180 Degrees Hydraulic
Jib Range of Articulation	130 Degrees (+70, -60)
Weight	12,200 kg
Drive Speed 4WD	6.1 kph
Gradeability 4WD	45%
Levelling Capacity (Fore/Aft)	10 Degrees
Levelling Capacity (Side-to-Side)	10 Degrees
Turning Radius	
Inside	2.55 m
Outside	5.68 m

Standard Specifications

Power Source

Engine	Deutz D2011LO4 Tier 4i (49 hp 36.4 kw)
Fuel Tank Capacity	117 L

Hydraulic System

Capacity	129 L
Auxiliary Power	12V DC

Tyres

Non-Marking Foam Filled

Standard Features

- Self Levelling Chassis
- 4WD
- Non-Marking Tyres
- SkyGuard SkyLine
- ClearSky Telematics
- Generator including AC Outlets to Platform and ELCB
- 180 Degree Hydraulic Platform Rotator
- Backlit LCD Platform Control and Display
- Swing-Out Engine Tray
- Flashing Amber Beacon
- All Motion Alarm
- 12V-DC Auxiliary Power
- Hourmeter
- Horn
- Control ADE® System
- Proportional Controls
- Gull-Wing Engine Hood
- Self-Closing Self-Locking Gate
- Lifting/Tie Down Lugs
- Load Sensing System
- AS/NZS 1418.10 Compliance

Accessories & Options

- Platform: 36 x 72 in. (0.91 x 1.83 m)
- SkySense™
- Mesh to Mid Rail
- Fan & Belt Shield
- Fire Extinguisher
- Platform Worklights
- White Noise (Squawker) Alarm
- SkyGlazier



670SJ SL

SELF-LEVELLING TELESCOPIC BOOM LIFT

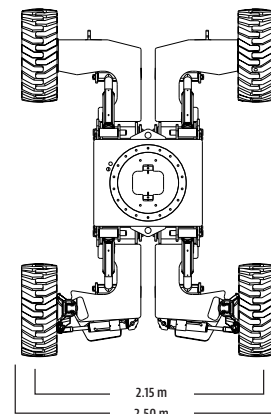
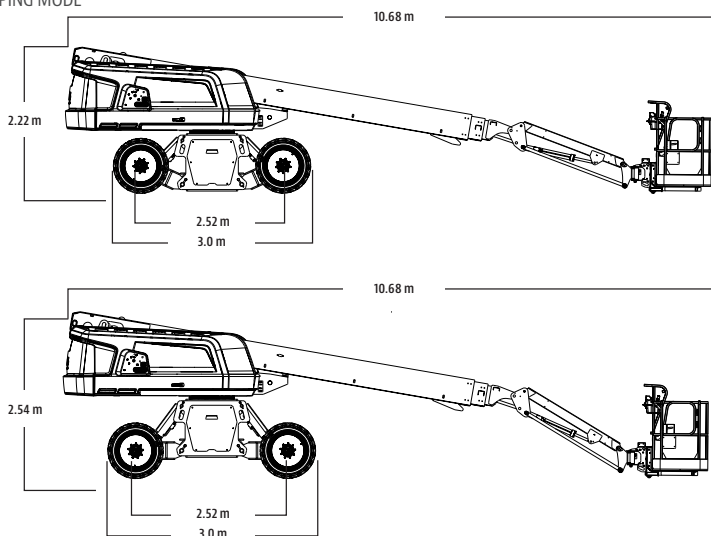
BOOM LIFT



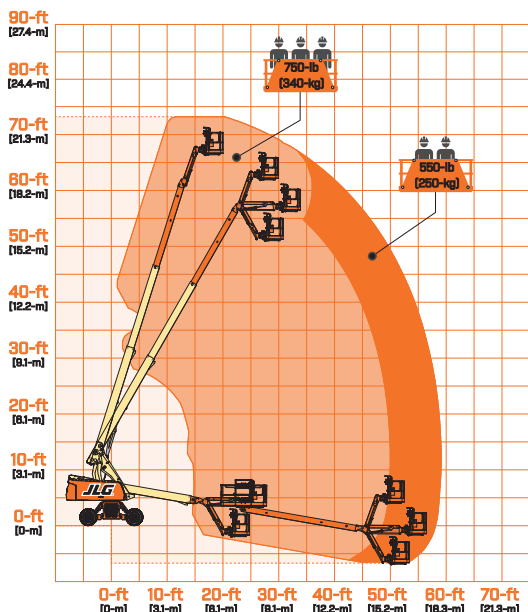
DIMENSIONS

All dimensions are approximate

SHIPPING MODE



REACH DIAGRAM



The JLG "1 & 5" Warranty

JLG Industries, Inc. backs its products with its exclusive "1 & 5" Warranty. We provide coverage on all products for one (1) full year and cover all specified major structural components for five (5) years. Due to continuous product improvements, we reserve the right to make specification and/or equipment changes without prior notification. This machine meets or exceeds AS/NZS 1418.10 2011 as originally manufactured for intended applications.

R082522



JLG Industries (Australia)

358 Park Road
Regents Park, NSW 2143
Telephone 02 8718 6300
Fax 02 8718 6377

www.jlg.com.au

An Oshkosh Corporation Company